

Hareshill Business Park

Client	Peel Developments
Contractor	Ennis Construction
Consultant	Capita Symonds
Area	40,000m ²

In brief

Situated on farmland in Greater Manchester, the new build development of Hareshill Business Park required a solution that would ensure commercial buildings were concealed from view for neighbouring residents so that local planning could be secured. The solution was a landscaped bund and Ennis Construction called on CMS to identify an earth retention solution for 33,700m³ of fill.

Project scope

The bund required for the Hareshill site was to be 400m long, up to 32m wide and 9m high so Ennis required a high strength geotextile solution to retain this amount of earth.

CMS conducted a design review which resulted in the original high density polyethylene (HDPE) geogrids proposed being replaced with Secugrid® 30/30 Q6 – flat geogrids made from interlaced extruded polyester bars. This offered a more efficient reinforcement solution, with the stronger polyester construction meaning that less material was required and the wall could be built faster.

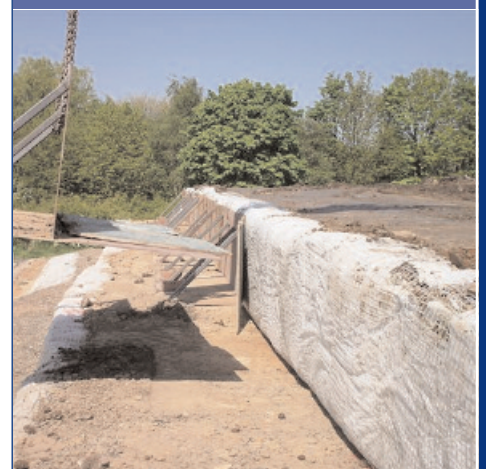
40,000m² of Secugrid® was used, with the biaxial grids offering a tensile strength of 30kN/m in both directions.

Benefits

- Higher strength material offered effective reinforcement solution
- Less material required resulting in significant cost savings
- Faster build time could be achieved due to efficiency of design
- The construction can be finished with top soil and landscaped to give a smooth aesthetically pleasing appearance



CMS Secugrid® provided an efficient earth retention solution for a 9m high bund, designed to screen views of Hareshill Business Park from local residents.



Northern Office

Unit 18 Eagle Park, Eagle Park Drive
Warrington. WA2 8JA
t: 01925 635783 f: 01925 635748

Southern Office

Dugard House
Peartree Road, Colchester. CO3 0UL
t: +44 (0)1206 216 695 f: +44 (0)1206 577 954

info@cmslimited.co.uk
www.cmslimited.co.uk